

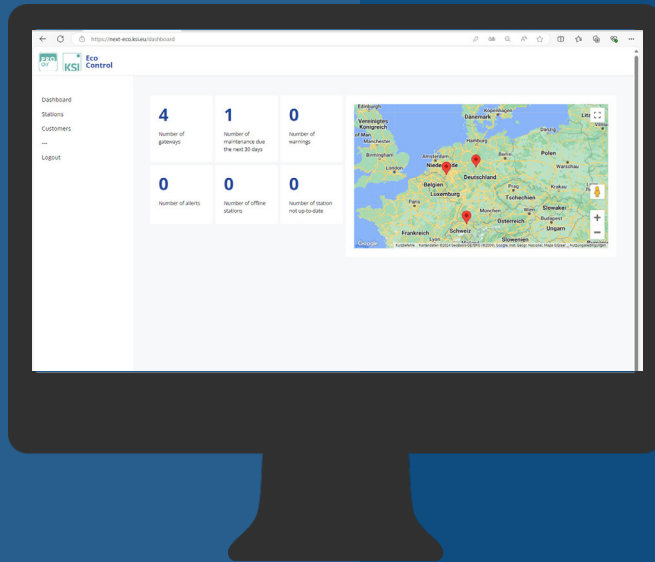
KSI|PROair ECOCONTROL

Online system monitoring



Rev 01_0425

Solutions for remote monitoring of compressed air installations



INDUSTRY
4.0



Real-time monitoring of compressor stations

The **ECOCONTROL** product portfolio brings every compressed air system into the cloud.

Online monitoring of key parameters, analysis of historical data, scheduling support for service jobs, flexible extensions for your requirements!

The unlimited data logging feature enables the user to analyse recurring issues and find their root cause. All datapoints can be visualised.

Basis module for the system can be **KSI ETC4.0** dew point control or **KSI|PROair GT4.0** gateway for systems without desiccant dryers.

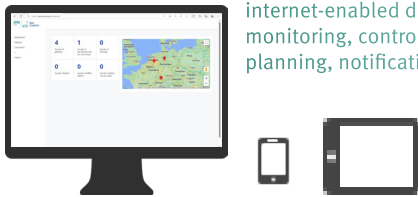
All settings are saved locally in the control unit or gateway - connectivity problems are not an issue.

ECOCONTROL plus effects +++

- + monitor critical situations online in real-time
- + save unnecessary trips to the compressor station
- + data logging and visualisation of current and historic data (no limit on storage)
- + warning and error notifications via e-mail
- + optimized service scheduling
- + no access to end user data for KSI
- + private label interface possible (conditions apply)
- + connection of multiple sensors by additional databoxes
- + remote control based on pre-defined rules
- + web-based application ▶ access with every internet-enabled device

KSI|PROair ECOCONTROL

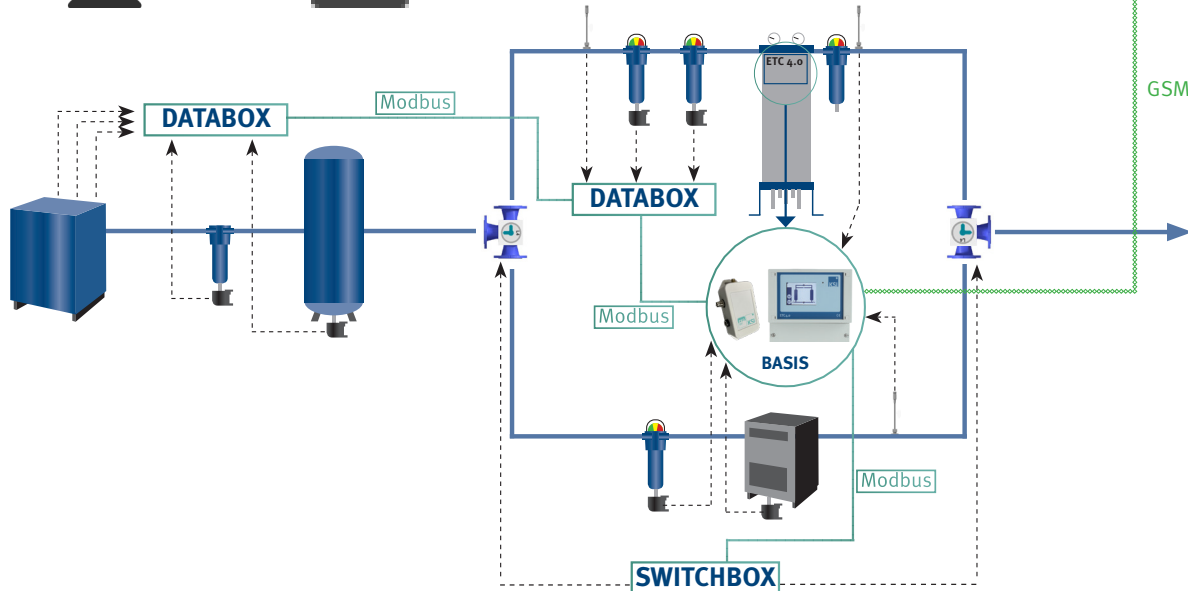
Online system monitoring



internet-enabled devices:
monitoring, control, service
planning, notifications



GSM | WLAN



Features

Basis setup

The dew point control **ETC4.0** can function as the basis for a **KSI|PROair ECOCONTROL** system.

This offers several advantages: With the installation of a desiccant dryer with **ETC4.0** everything is ready to be connected to the **ECONET** - anytime.

Without any additional hardware up to 6 sensors can be connected to the base unit. (more on page 3)

The control can be operated by a colour display. For a more convenient setup the control unit can be accessed via Wifi and the configuration done by any device.

To monitor compressed air stations without desiccant dryers the new KSI|PROair GT 4.0 can be installed.

Additional hardware

The **ETC4.0** and **GT4.0** can be extended by connecting different boxes via Modbus. Two different **DATABOX** versions - sizes S and L - offer additional inlet options and the **SWITCHBOX** enables the user to perform actions remotely.

Software

KSI|PROair ECONET is operated as a webapp. It can be accessed by any internet-enabled device. The interface adapts to the display used. The connection to the webapp is encrypted, as is the connection between the servers and the control or gateway.

Monitoring options

All relevant system values like volume flow, pressure dew point, operating pressure, operating hours and many more can be monitored. The unlimited datalogging allows comprehensive analyses.

KSI|PROair ECOCONTROL

Online system monitoring



Hardware infrastructure:

ETC4.0

- + sends data to the cloud
- + plug&play connection for sensors with Modbus interface
- + GSM LTE & Wifi with worldwide coverage
- + 6 inputs for sensors: 5 x 4-20 mA, 1 x PT1000



GT 4.0

- + sends data to the cloud
- + plug&play connection for sensors with Modbus interface
- + GSM LTE & Wifi with worldwide coverage
- + 1 input for sensor/DATABOX: 1 x Modbus M8 plug



DATABOX S

- + connection to ETC4.0 or GT4.0 via system Modbus (max. 5 DATABOX units)
- + 1 x PT1000
- + 3 x 4-20 mA
- + 2 x Modbus

SWITCHBOX

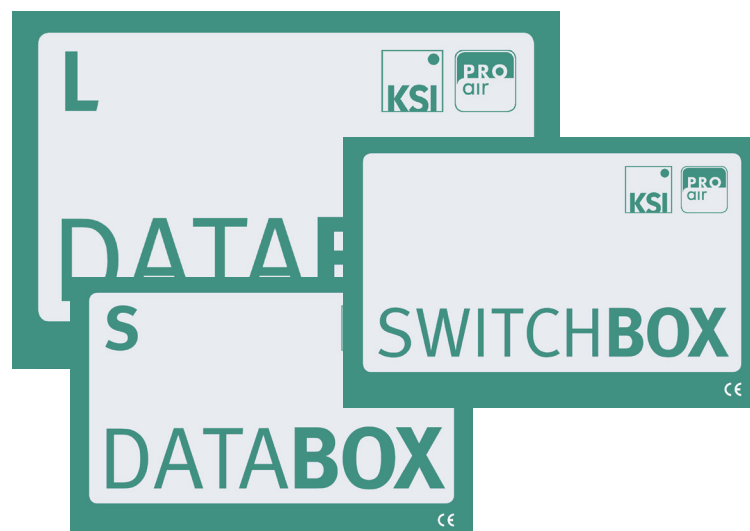
- + 5 x potential-free changeover contact
- + control of pre-defined situations, i.e. for automatic summer/winter switch or pressurization systems

DATABOX L

- + connection to ETC4.0 or GT4.0 via system Modbus (max. 5 DATABOX units)
- + 3 x PT1000
- + 9 x 4-20 mA
- + 7 x Modbus

„IOT Flex SIM

- + coverage in more than 30 countries
- + 10 years, 500 MB



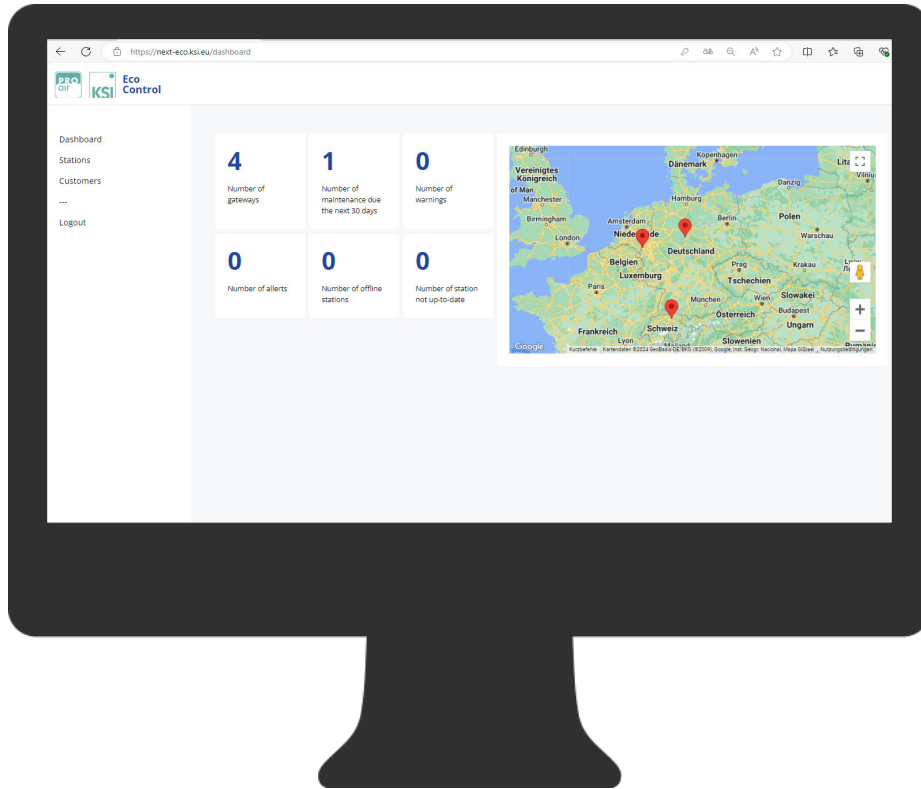
KSI|PROair ECOCONTROL

Online system monitoring

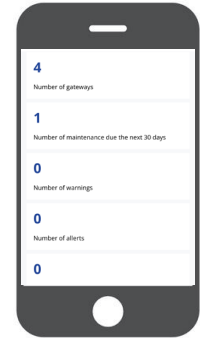


Software infrastructure

+ dashboard with status information for all stations

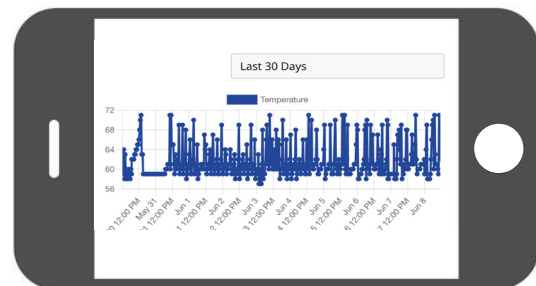
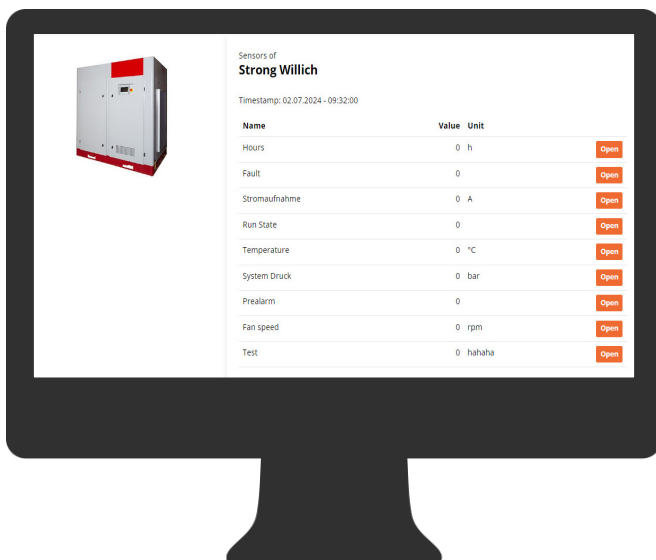


+ access with every internet-enabled device



+ data logging without storage limitation for every sensor value

+ overview of all current values for each station



KSI|PROair ECOCONTROL

Online system monitoring



KSI|PROair ECONET: software versions

KSI|PROair ECONET

	software version	
	ECONOMY	BUSINESS
online monitoring of current parameters	✓	✓
configuration with every device possible	✓	✓
error and warning notifications via e-mail	✓	✓
data logging and visualisation of current and past values (no storage limitation)		✓
maintenance interval configurable: preventive maintenance support, time or operating hour controlled		✓

Visualisation

dashboard shows a summary of all stations, all notifications and all errors	✓	✓
free description of each component (i.e. location)	✓	✓
2 highlight values per station displayed in station overview	✓	✓
upload of pictures in station setup		✓

Features

encrypted server connection	✓	✓
support mode for access by KSI	✓	✓
data update interval configurable	✓	✓
configuration of DATABOX S and L sensor inputs	✓	✓
configuration of SWITCHBOX sequences		✓

Private label (conditions apply)

individual logo: in the KSI ECONET webapp, the configuration interface and the control display (when using ETC4.0)		✓
individual colour setting for ECONET interface		✓